

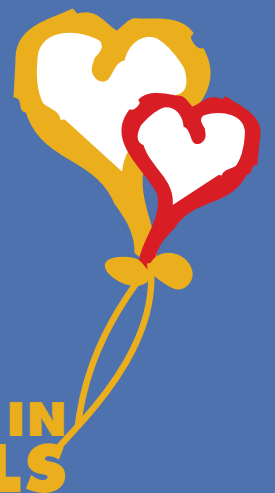


Give seriously ill
children the best gift
of all - their families.

Leaving a Gift in your Will to
Ronald McDonald House Charities



Ronald McDonald
House Charities®
Australia



**GIFTS IN
WILLS**

Ronald McDonald House Charities. Where family life carries on.

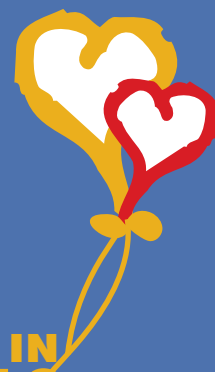
Two brothers, 145 nights at Ronald McDonald House.

Scout and London have spent much of the first part of their lives in hospitals. But with the help of Ronald McDonald House, they've been able to have their parents and each other nearby.



"It scares me to think what we would have done without Ronald McDonald House. Financially we would have had a very stressful time to continue with everyday living and also making mortgage repayments. We would not have had a safe comfortable child friendly place to take the children... we feel so supported and have made amazing friendships with the staff and volunteers in the house."

London & Scout's Mum, Nicole




**GIFTS IN
WILLS**



Leaving a Gift in your Will can support seriously ill children and their families long into the future.

We can't think of a better way for your kindness and compassion to live on than to leave a gift in your Will to Ronald McDonald House Charities (RMHC).

Your gift will help to make sure that generations of families can get the vital support and care that they need to help minimise the impact of their child's illness on their family and their future.



Family always comes first – Keeping families close™

We believe completely in the importance of family – it's at the heart of everything that we do. After those close to you have been taken care of, leaving even a small percentage of whatever is left can contribute to ensure the care and support of the next generation of families who need our help, as well as your loved ones.

You may also choose to talk to your family about your Will and why you're committed to supporting seriously ill children through a gift in your Will, to ensure that they understand your wishes.

We invite you to keep in contact so you can see the benefit of your planned gift – why not come and explore a Ronald McDonald House and see in person The House that Love Built®.

It's a life-changing gift that will keep on giving.



**Ronald McDonald
House Charities®**
Australia

Why us?

Ronald McDonald House Charities is an independent charity that has been helping Australian families with seriously ill children stay together since 1981.

Our Mission is to support the ever changing needs of seriously ill children and their families.

When a child is diagnosed with a serious illness, it can have a devastating impact on the whole family who are forced to leave their homes, work, schools and community to travel for their child's treatment.

We offer support in every State and Territory across Australia.

Our Programs



Ronald McDonald® House - our Houses are located close to many women's and children's hospitals across Australia. We provide a homely and inviting place to stay for the whole family while their child is undergoing treatment in a nearby hospital. Part of what makes our Houses unique is that families are able to benefit from the support of our volunteers and staff, and the companionship of other families who are navigating a similar journey. Our communal facilities also provide families with the independence to be able to cater for themselves and keep up with day-to-day living so that family life can carry on as much as possible.



Ronald McDonald® Family Room - our Ronald McDonald Family Rooms are located inside many hospitals and are exclusively for the families of children undergoing treatment in a nearby ward. Run by our friendly staff and volunteers, our Family Rooms are welcoming spaces where families can take time out from the clinical environment of the wards, have a tea or coffee, freshen up with a shower or find a quiet space for a much-needed nap. Our Family Rooms also have dedicated play areas so the siblings of seriously ill children can have a bit of fun.



Ronald McDonald® Family Retreats - with our Family Retreats in picturesque seaside locations across Australia, Ronald McDonald Family Retreats provide a peaceful getaway from the everyday, where families can simply be together in a tranquil setting. Families can enjoy up to a week of free accommodation, offering a welcome escape for those who might otherwise be unable to afford any time out due the pressures of caring for a seriously ill child.



Ronald McDonald® Learning Program - The Ronald McDonald Learning Program assists school-aged children with serious illnesses and injuries to catch up on missed education following treatment and recovery. Providing a suite of educational support services, including one-on-one tutorials with experienced teachers, our Ronald McDonald Learning Program is tailored to students' individual needs. We aim to build each child's confidence and self-esteem in preparation for their return to the classroom.

How we help

Research tells us that Ronald McDonald Houses:



Reduce stress and financial burden for families.¹



Help families cope better and focus on the needs of the sick child when they are supported by family and loved ones.²



Assist parents to have a better quality of sleep at Ronald McDonald House, compared to the hospital bedside.³

Reference Source: 1 - Daniel et al. *Rural and Remote Health* (2013)
2 - Nabors et al. *Families, System and Health* (2013)
3 - Franck et al. *Behavioural Sleep Medicine*

How are we funded?

As we are an independent charity, your gift to Ronald McDonald House Charities (RMHC) will ensure that we are able to continue to support families right across Australia as they face one of the most challenging experiences in their lives.

Your donation will be used where the need is greatest across our vital programs including our Houses, Family Rooms, Family Retreats, Care Mobile and national Learning Program. RMHC values the generosity of our supporters and that's why we ensure that we make the most of every dollar we receive.

Our charity relies on significant financial and volunteering support from individuals, community groups and many organisations, including our founding Mission Partner McDonald's Australia.



**GIFTS IN
WILLS**



Your Will

It is so important to have an up-to-date Will to ensure that your wishes are honoured and to ease uncertainty and additional stress for family members. It's easy to get one written for the first time or have your current Will revised and updated with all of your latest wishes.

If you would like to consider leaving a gift to Ronald McDonald House Charities Australia in your Will, simply ask your solicitor or Trustee Company to insert a few simple words into your new Will. Please see our suggested wording to leave a gift or a bequest below or visit www.rmhc.org.au/leave-a-gift

Suggested wording for your Will

This short clause contains all the details of the gift you'd like to leave to help support children and their families through such a tough time.

General purpose gift

"I give... [please select from one of the following options for your type of gift and delete those that are not relevant]"

- ... my entire estate
- ... XX percentage of my estate
- ... the rest and residue of my estate
- ... XX percentage of the residue of my estate
- ... the sum of \$XX
- ... XX from my portfolio of shares
- ... XX description of a specific item..... to

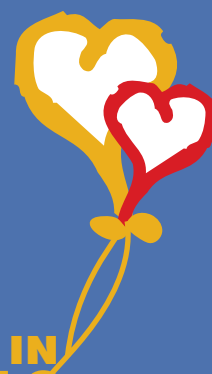
Ronald McDonald House Charities Trust (ABN 26 037 589 412) operating as Ronald McDonald House Charities Australia of 21-29 Central Avenue, Thornleigh, NSW 2120, for the general purposes of such entity.

I declare that a receipt from the treasurer or other proper officer of Ronald McDonald House Charities to the executor(s) of this Will, will be evidence that the executor(s) has discharged his/her/their duties in accordance with this clause."



"We don't know what the future holds and how long we have with Raph so cuddling him and enjoying him day by day is the what my family is most grateful for. My husband and I have always had that feeling of relief staying at Ronald McDonald House"

Jen, Raphael's Mum



**GIFTS IN
WILLS**



Get in touch

Call us on **1300 307 642**

Visit www.rmhc.org.au

Or email supporter@rmhc.org.au

Contact our Gift in Wills team direct at
leaveagift@rmhc.org.au or visit
www.rmhc.org.au/leave-a-gift



Ronald McDonald
House Charities®
Australia