



**FIVE YEAR
STRATEGIC
PLAN**
2024-2029



Foreword from
THE PRINCIPAL

Janet Clarke Hall, as the first residential university college for women in Australia, has a unique story to tell, one that continues to attract the most promising students who dream of following in the footsteps of our trailblazing alumni.

Our rich history has guided and inspired us as we have looked to the future, asking how best we can continue the College's proud legacy of offering equity of access in higher education.

The most significant remaining barrier to an excellent university education and experience is no longer gender or even race, but low socio-economic status. Just as Dr Alexander Leeper and later Janet, Lady Clarke sought to remove the barrier to women's participation more than a century ago, we seek to do the same for all deserving young people today.

Our Vision – to become the first college in Australia to administer a need-blind admissions process and to commit to meeting 100% of each student's demonstrated financial need – is undoubtedly ambitious and goes beyond anything articulated by other residential colleges in Australia. If we are successful, it will mean that as we enter our 150th anniversary year in 2036, we will once again be world leaders in creating transformative opportunities for deserving young people.

Growing our endowment to fund our generous scholarships in perpetuity is just one part of the important work that we must do. We must also ensure that we can make significant investments in the care and enhancement of our heritage-listed site, and continue to offer a rigorous academic and personal development program in order to provide a sector-leading living and learning environment.

This will ensure that Janet Clarke Hall is an aspirational choice for exceptional students from all backgrounds, not only those who require financial assistance.

In 2024-2025 we will assess our current institutional capabilities and identify those actions necessary to meet our 10 Strategic Goals. From 2025-2028 we will focus on developing and delivering those initiatives and improvements, before entering an evaluative and reflective phase in 2029 to take stock of our progress and adapt accordingly if necessary to ensure the long-term success of our Vision by 2035.

It will be an honour and a privilege for me to work with our community on the implementation of this Strategic Plan, and I invite you to join us as we seek to make this progressive Vision a reality.

DR ELEANOR SPENCER-REGAN
PRINCIPAL



FIVE YEAR
STRATEGIC
PLAN
2024-2029

OUR PURPOSE

To nurture, inspire, and empower the thought leaders and change makers of the future in an on-campus residential community that encourages students' academic success, intellectual and personal growth, social responsibility, and powerful belief in their own potential.

OUR VISION

To become Australia's first need-blind residential college, meeting 100% of demonstrated financial need and offering sector-leading transformative residential opportunities to the most promising young people in Australia and beyond, regardless of socio-economic background.

COMMUNITY

We work together to sustain a safe and supportive environment where all of us can be our authentic selves, contributing according to our strengths and receiving support according to our needs.

COURAGE

We challenge ourselves every day to grow beyond our comfort zone by believing in our own potential and by taking chances, risks, and new opportunities.

GENEROSITY

We care for those around us, using our privilege and talents to effect positive change in our local, national, and global communities.

OUR
VALUES

EXCELLENCE

We strive to be the best that we can be in all that we do, learning from our successes and our struggles alike.

CURIOSITY

We think for ourselves, asking searching – and sometimes difficult – questions, inspired not only by our academic disciplines but also by a wide range of other interests.

STRATEGIC GOALS

In order to fulfil our Purpose in the present and achieve our Vision in the future, we commit ourselves to the 10 strategic objectives below.

STUDENT EXPERIENCE

- We will continue to foster a warm, welcoming, and inclusive College culture for students, staff, and visitors.
- We will promote, support, and celebrate intellectual development and academic achievement.

WIDENING PARTICIPATION

- We will attract more of the most promising young people in Australia and internationally, particularly those who have historically been excluded from higher education and colleges, with the ultimate goal of administering a need-blind admissions process and meeting 100% of demonstrated financial need by 2035.
- We will support all our students to become career- and life-ready through a wide range of leadership and personal development opportunities.

REPUTATION AND RELATIONSHIPS

- We will build our reputation, both nationally and globally, and be recognised as a leading institution within the sector.
- We will have a positive social impact in our communities through volunteering and outreach.

ADVANCEMENT AND PHILANTHROPY

- We will strengthen links with alumni from all decades to build a global community through enhanced engagement.
- We will significantly grow our endowment through donor relationships to support our strategic aims, including our need-blind admissions policy, the care of our heritage-listed buildings, and the resourcing of our educational programs.

ESTATE AND FACILITIES

- We will invest significantly in our heritage-listed buildings and grounds to provide an attractive living and learning environment for current and future students.
- We will strive to operate in an environmentally sustainable way.

What is a NEED-BLIND ADMISSIONS POLICY?

Need-blind admission refers to an admissions policy that does not take into account an applicant's financial status when deciding whether or not to accept them. This means that applicants are assessed strictly on their merit and potential, rather than on their ability to pay.

Applicants are still asked to provide the institution with information about their financial situation as part of a Major Scholarship application, but this is not seen by those staff making admissions decisions until after an admissions decision has been made.

This approach typically results in a higher percentage of accepted students who require financial assistance and means that an institution will require a substantial endowment or other funding sources to support the policy.

Institutions that are need-blind and meet full need for all accepted students tend to be highly selective due to the large number of high-quality applications they receive.

What does it mean for the College to meet 100% of DEMONSTRATED FINANCIAL NEED?

If an applicant to the College requires financial support to meet the cost of their residence fee, they will be invited to submit a Major Scholarship application, evidencing their financial circumstances, including household or parental income, expected parental contributions, personal savings, income from part-time work, eligibility for Centrelink payments, and any other scholarships or bursaries awarded.

If they are offered a place, the College will then assess their Major Scholarship application, working out how much they can reasonably afford to pay towards their residence fee. The College commits to covering the "gap" between what they can reasonably afford and the full cost of their residence fee. For example, if a student can reasonably afford to pay \$24,000 of their \$35,842 residence fee (based on the 2024 fee) from a combination of parental contributions, Centrelink payments, and income from part-time work, the College commits to covering the remaining \$11,842.



"Each day I sit on long tables and join conversations on religion, philosophy and physics. I sing along to piano and guitar in our common spaces whilst catching stray ping-pong balls. In the late hours of night, I wander the halls and am overwhelmed. A place once home to so many, now a home to me. I wish my words could express the kind of love and gratitude Janet Clarke Hall has fostered in me."

FARYAL HASAN
FROM LAHORE, PAKISTAN
(BACHELOR OF FINE ARTS, 2024)



Scholarships at Janet Clarke Hall 'A BEACON OF HOPE AND OPPORTUNITY'



"Originally from Mauritius, I have always wanted to pursue a career in medicine. This dream, however, comes with significant financial challenges. My scholarship at JCH has been instrumental in alleviating these concerns, allowing me to focus wholeheartedly on my studies and personal growth. This means more to me than words can adequately express. It represents not just financial support, but the belief that others have in my potential to succeed and make a difference and is testament to the enduring spirit of community and giving back that defines JCH. I am sincerely grateful for this assistance and hope in the future to be in a position where I can similarly support students in financial need."

ETHAN WATSON FROM BEAU-BASSIN, MAURITIUS
(BACHELOR OF BIOMEDICINE, 2023)

"To me, the May Dunn Scholarship is not just financial support; it's a beacon of hope and opportunity. My passion for the arts has been a driving force in my life and receiving this scholarship has further fuelled my dedication to my craft. I express my deepest gratitude to everyone involved in believing and investing in my future. Your generosity has opened doors that I once thought were out of reach, and for that I am eternally grateful."

WANWUE TARPEH FROM WEIR VIEWS, VICTORIA
(BACHELOR OF FINE ARTS, 2024)



"The people I have met at JCH are among the kindest and most genuine individuals I have ever encountered, and I am confident that I have already made some lifelong friends. The support from staff and tutors has made my transition to university life seamless. I am extremely thankful to call JCH my home while studying, and my scholarship has given me the freedom to focus on my studies and fully immerse myself in my university experience."

JIEALLA GUTTIE-GALPIN PROUD YANDRUWANDHA WOMAN
FROM GEELONG (BACHELOR OF FASHION (ENTERPRISE), 2024)

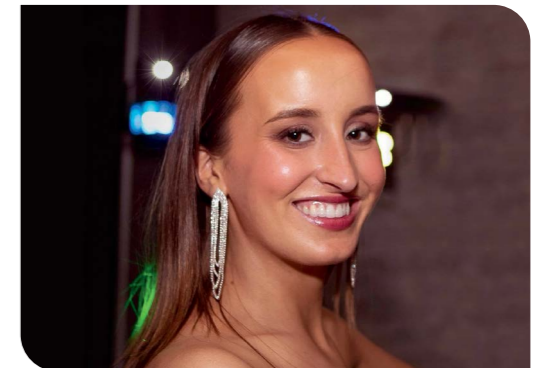
"My time at JCH has been marked by profound personal growth and enriching experiences. I continue to be inspired by the diverse and inclusive community. The friendships I've forged here are genuine and enduring and I am constantly uplifted by the ambitious and supportive environment that fosters growth and camaraderie. Your unwavering support has enabled me to thrive academically, professionally, and personally, and I remain committed to making meaningful contributions to the JCH community in the future."

BRIGITTE SHILL FROM ROSEBUD, VICTORIA
(MASTER OF CHEMICAL ENGINEERING, 2021)



"Thanks to the Kenneth Moore Memorial Music Scholarship and the JCH Society Scholarship, I not only have the capacity to develop my career, enhance my academic pursuits and live and work in one of the best cities in the world, I have also been given the gift of a supportive, stimulating and irreplaceable home."

KLEARHOS MURPHY FROM ARDROSS, WESTERN AUSTRALIA (MASTER OF MUSIC (RESEARCH), 2023)





Royal Parade, Parkville VIC 3052
Telephone: +61 3 9349 7100
Email: office@jch.unimelb.edu.au
Website: jch.unimelb.edu.au

Janet Clarke Hall
THE UNIVERSITY OF MELBOURNE

