



LEAVING A LASTING LEGACY

IN THIS TOGETHER
parkinson's
WESTERN AUSTRALIA



LETTER FROM THE CHIEF EXECUTIVE OFFICER

Leaving a gift in your Will is one of the most important decisions you can make because it provides a remarkable opportunity to leave a lasting gift that preserves the values that are important to you during your lifetime.

Parkinson's WA provides much needed support to more than 20,000 people living with or affected by Parkinson's. Parkinson's WA is unwavering in its commitment to providing relevant and quality services to maintain the well-being, dignity, and quality of life for those diagnosed by the condition.

By leaving a bequest to Parkinson's WA, you are enabling us to continue to provide the best service possible by supporting our free community-based Parkinson's Nurse Specialists. This is complemented by Parkinson's WA support groups, specialised development of health professionals and other activities, all with the aim of maintaining the best quality of life for the person with Parkinson's and their families.

We realise this is an important decision for you and your family. We feel honoured to be included in your considerations and we encourage you to contact us if you would like to discuss how you can leave a lasting legacy for Western Australian's living with Parkinson's.



A handwritten signature in black ink that reads "Yasmin Naglazas". The signature is fluid and cursive.

Yasmin Naglazas
Chief Executive Officer

ABOUT US

Parkinson's WA are a Western Australian not-for-profit who provide specialist nursing and support to any West Australian facing a diagnosis of Parkinson's, including their families and carers. Thanks to the generosity of the Western Australian community, all services are tailored to meet the needs of each individual.

Our Vision

A nation without Parkinson's

Our Mission

To encourage people living with Parkinson's to get the most out of life, to advocate on their behalf and to secure funding to support research.



WHY MAKE A WILL?

Having a Will is a love letter to your family, it means that you decide what happens to your property. Wills can distribute property, name an executor, name guardians for children, forgive debts and more.

HOW YOUR GIFT MAKES A DIFFERENCE?

Once you have ensured that your loved ones will be looked after, leaving a bequest or a planned gift, simply means that you include Parkinson's WA as a beneficiary in your will. We value every gift, no matter the size. Your gift allows us to continue to make our services available to people living with the condition and their families and friends, in particular our Parkinson's Nurse Specialist Service (PNS), Support Groups, Seminars, and NDIS information.

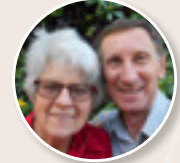
A legacy is a powerful gift that will allow us to plan, navigate uncertainty and remain steadfast in our commitment to West Australians facing Parkinson's. Past legacy gifts have allowed us to keep providing important services through times of uncertainty or change.

Without these legacies, our impact at Parkinson's WA would not be as far-reaching.

Our income comes from the generosity of people like you – whether it is through donations, taking part in our events or supporting those who raise funds on our behalf.



My partner, Pete, and I have decided to leave a Gift in our Will to Parkinson's WA. This is our way of acknowledging the tremendous support we have had from the association.



Our Parkinson's Nurse Specialist offers practical advice on how to manage day by day. The association provides excellent seminars, newsletters and monthly support group meetings. Staff and volunteers are so positive; they encourage us to live as fully as we can.

We can't get all these benefits from our twice-a-year visits to our neurologist who is taken up with the progression of the condition and reviewing the medications.

I want to use my will to repay some of the goodness I have received. It's my chance to make a difference.

Jan Knight



My family benefited greatly from the caring and professional support received from Parkinson's WA's specialist nurses during my wife, Anne's journey with Parkinson's.



We both agreed it would be appropriate to recognise this through a bequest in our wills and although Anne is no longer with us, I remain forever indebted for the support from Parkinson's WA.

John McDonald



HOW TO LEAVE A GIFT IN YOUR WILL

We will always respect your privacy and promise that we will use your gift so that it has the greatest impact. We appreciate and recognise that your will is personal and unique to you. Parkinson's WA recommends that you consult a solicitor before writing or updating your will.

The two most common types of gifts you can leave in your will:

Residuary bequest

This is a gift of what is left in your estate, or a percentage of that amount after all your loved ones, other gifts, taxes, and debts have been taken care of. It's a wonderful way of ensuring your loved ones and responsibilities are looked after. If you have not yet made your will, creating one that includes a residuary bequest to Parkinson's WA is very easy. All you need to do is provide this simple information to your solicitor or public trustee.

Provide your solicitor with the following wording:

I leave to Parkinson's Western Australia Incorporated of 11 Aberdare Road Nedlands WA 6009 – ABN: 88 404 764 099 (proportion of residue to be completed). My bequest is to be used for the general purposes of Parkinson's WA. I declare that the receipt of the Treasurer or other duly authorised officer shall be a sufficient discharge to my Executors.

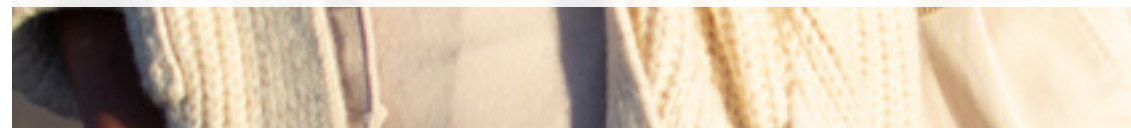


Pecuniary or Specific gift

A pecuniary or specific gift clearly specifies the donation: it can be money, property, stocks and/or shares.

Provide your solicitor with the following wording:

I leave to Parkinson's WA Incorporated 11 Aberdare Road Nedlands WA 6009 – ABN: 88 404 764 099 (description of item) for the general purposes of the said charity and I direct that the receipt of the Treasurer or other duly authorised officer shall be a sufficient discharge to my Executors.



MORE INFORMATION

If you have any questions about leaving a bequest or gift, please do not hesitate to contact:

Kerrin Girando
Fundraising Manager
Parkinson's WA

11 Aberdare Road,
Nedlands WA 6009
Email: kerrin@parkinsonswa.org.au

PARTNER WITH US

Parkinson's WA
ABN: 88 404 764 099

Phone: (08) 6457 7373
Fax: (08) 6457 7374
Email: info@parkinsonswa.org.au

www.parkinsonswa.org.au


parkinson's IN THIS TOGETHER
WESTERN AUSTRALIA

